

Santa Maria Kennel Club

**AKC All Breed Agility Trials,
August 5 - 7, 2016**

Elks Lodge:1309 N. Bradley, Santa Maria, CA 93454

Set Ups, Check In, Start Times, Walk Through

Preliminary running

order contingent on move-up entries not yet received, or when adding wait-listed entries after closing.

Exhibitors shall be provided armbands or stickers indicating their dog's running order number for this trial. Per AKC rules, the move up deadline is 6 pm on Monday, August 1, 2016. Absolutely no move ups for Friday will be allowed after this time and date. Move ups for Saturday and Sunday must be given to the Trial Secretary, at the show site, in writing within 15 minutes of the last dog completing the course on Friday or Saturday.

Novice B/A Standard, JWW and FAST classes will run together by jump heights with division B running before division A. Excellent & Master Standard, JWW and FAST classes will run together by jump heights with Master

running before Excellent. The preferred classes will run intermingled with the regular classes by height. Each class will be briefed separately. Lunch breaks will be at the Judge's discretion. A warm-up area, consisting of a regulation agility jump will be provided for all exhibitors.

Set Ups No exhibitor set ups before 11 am on Friday unless you are part of the set up crew.

Food and beverages

The club will offer lunch each day at no cost for those working two or more classes. All others may purchase lunch for a cost of \$8.

Check in will begin

Friday: noon

Saturday and Sunday 7:00 am.

Judging will begin

Friday: 1:00 pm

Saturday and Sunday:
8:00 am.

Walk through will begin as soon as the Judge has approved the course. This will be at approximately 12:30 pm on Friday and 7:30 am Saturday and Sunday. For all classes *except* Master/Excellent Standard and JWW all heights will walk together in one group.

See next page for Master/Excellent Standard and JWW walk instructions.

Beverly Morgan Lewis will judge all classes each day.

Friday: 210 runs

Saturday: 303 runs +
Barrel Races

Sunday: 285 runs

Directions:

Elks Lodge – Santa Maria, CA

The rings will be outside on grass and measure 100 x 100 for standard and 100 x 90 for JWW. Bring shade.

From Hwy 101

Take the Donovan Rd. exit and turn west. Turn left onto College Dr. Turn left onto Bradley Rd.

Directions to Vet from show site:

Adobe Animal Clinic: 2255 S. Broadway #D, Santa Maria, CA 93454. (805) 925-1131

Take Bradley back to College. Turn right on College. Turn right on Donovan Rd. Take 101 south. Exit Betteravia Rd. Turn right onto Betteravia Rd. Turn left on CA-135 which is Broadway. The vet office is approximately 5 miles from the show site.

All About the Height Cards

All dogs, jumping lower than 24" in regular classes and lower than 20" in preferred classes, who are under two years of age and do not have a temporary height card or are over two years of age and do not

have a permanent height card must be measured prior to their first run of the weekend. It is the exhibitor's responsibility to ensure their dog is measured before their first run. Measurement of dogs

will take place near the score table *throughout* the day. Measurement will count toward height cards.

If you need to be measured come to score table and ask for Pam or Lorie.

Entry Information

The dog specific information was emailed to you at the time the entry was processed. This may have been several weeks ago. If you need to verify the classes entered email lorie45abbott@gmail.com
Lorie Abbott

Trial Secretary
925-784-9316

Class Order, Height Order

Dogs will be judged from the lowest armband number in each class to the highest armband number in each class.

Judging will rotate between rings.

Master/Excellent Standard and JWW: There will be two walk groups: 4/8/12/16 and 20/24/26. *Both* groups will walk before judging begins. The order is walk/walk then run

Friday:
 Premier Standard: 24 20 16 12 8 4
 Premier JWW: 24 20 16 12 8 4
 Master Standard: 24 20 16 12 8 4
 Master JWW: 24 20 16 12 8 4
 Master FAST: 24 20 16 12 8 4
 T2B: 24 20 16 12 8 4

Saturday:
 Premier Standard: 20 24 4 8 12 16
 Premier JWW: 20 24 4 8 12 16
 Master Standard: 20 24 4 8 12 16
 Master JWW: 20 24 4 8 12 16
 Open Standard: 4 8 12 16 20 24
 Open JWW: 4 8 12 16 20 24
 Novice Standard: 4 8 12 16 20 24
 Novice JWW: 4 8 12 16 20 24
 Barrel Races!
 Master FAST: 20 24 7 8 12 16
 Open FAST: 4 8 12 16 20 24
 Novice FAST: 4 8 12 16 20 24

Sunday:
 Time to Beat: 16 12 8 4 24 20
 Premier JWW: 16 12 8 4 24 20
 Premier Standard: 16 12 8 4 24 20
 Master JWW: 16 12 8 4 24 20
 Master Standard: 16 12 8 4 24 20
 Open JWW: 4 8 12 16 20 24
 Open Standard: 4 8 12 16 20 24
 Novice JWW: 4 8 12 16 20 24
 Novice Standard: 4 8 12 16 20 24

Volunteers

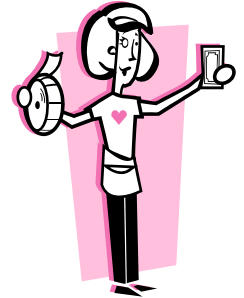
SMKC would like to thank you in advance for volunteering to work at this year's event.

Dry erase boards will be located near each ring. If you see a blank space and have free time just write your name in the blank or volunteer with Pat White.

Charity Fundraiser Raffle

Raffle Tickets will be available for purchase on Saturday during the Agility Trial. Winning Tickets will be drawn on Saturday.

We are looking for a few more *new* items to be donated to the raffle. Please bring your donation to the raffle table.



BARREL RACES

Saturday: after Novice JWW and before Master/Excellent FAST

Barrel Racing Entry fee \$10

21 Pre-registered. Day of will be accepted at the main score table until noon Saturday.

Dogs/Exhibitors are not required to be entered in the licensed show to enter Barrel Racing however, both exhibitor and dog must be in good standing with AKC and sign a entry form.

Course will be numbered and consist of a maximum of 5 tunnels two jumps, with bar on the ground and with 10-12 total obstacles. Obstacles will be arranged and numbered so course resembles a cloverleaf pattern similar to equestrian barrel racing. Maximum time of 40 seconds per dog.

Dogs will compete one of three heights based on height at the withers using same guidelines as **AKC agility heights.**

Heights: 4 & 8 dogs 12 & 16 dogs 20 & 24 dogs

Fastest dog in each height wins a dog related item.

Numbers by Class

So, When Should I Arrive

	Standard	JWW	FAST	T2B
Friday				26
Master	70	66	33	
Premier	16	13		
Saturday				
Novice	31	24	11	
Open	14	20	6	
Master	73	74	18	
Premier	17	15		
Sunday				35
Novice	27	27		
Open	16	18		
Master	68	68		
Premier	12	14		

Saturday and Sunday

Check in begins at 7:00 am. You are not required to check in at this time however, you should plan to arrive in plenty of time for course walking and, if necessary, measurement of dog.

Judging begins at 8:00 am in the Standard ring

For Standard Dogs calculate 90 seconds for each dog in the class.

For all other classes calculate 60 seconds per dog.

For course building calculate 10 minutes.

For course walk calculate 13 minutes for all classes except Master/Standard which is 16 minutes.



No More Armbands

AKC announced that effective August 1

Clubs are no longer required to provide or require Exhibitors to wear armbands at Agility Trials.

Yes! Finally. Armbands don't stick or if they do stick they are on the wrong layer of clothing, expensive and waste of resources. SMKC will not provide/require armbands.

Doing The Math

Using Saturday as an example:

Open Standard is after Premier Standard, Premier JWW, Master Standard and JWW.

Premier Standard 17 = 26 min

Premier JWW 15 = 15 min

Build Master Standard = 10 min

Walk Master Standard = 16 min

Master Standard 73 = 110 min

Build Master JWW = 10 min

Walk Master JWW = 16 min

Master JWW 74 = 74 min

Build Open Standard = 10 min

My best guess is that Open Standard will begin judging 290 minutes after 8:00 am or *around 1:30 pm*. Keep in mind the walk will be during judging of Master JWW. This is a guess and not a promise.

All judging should be complete by 6 pm.

Minions:

Course Builders: Angela Sutton, Barbara Sciaroni, Pam Fugitt Hetrick

Score Table: Laurie and Lorie

Ring: Barbara Sciaroni and ??

Crew Chief: Pat White

Dave Swinson—Club Liaison and Schlepper

Tracy—Lunch